

Upgrading to SDL MultiTerm Desktop 2009

The purpose of this document is to outline the steps necessary to upgrade from SDL MultiTerm Desktop 2007 to SDL MultiTerm Desktop 2009. In just a few minutes this document will give you an overview about what you need to do. For details on what happens when upgrading termbases, please visit www.sdl.com and select SDL Knowledge Base from the support tab at the top of the screen. Once within the SDL Knowledge Base type 2572 to view the relevant article.

Contents

1.1	What is SDL MultiTerm?	1
1.2	Why should I upgrade?	1
1.3	How do I upgrade?	2
1.4	Obtain the installer	2
1.5	Run the installer	3
1.6	Start MultiTerm	4
1.7	Data migration – accessing legacy termbases	4
1.8	Any Problems?	4

1.1 What is SDL MultiTerm?

SDL MultiTerm® provides one central location to store and manage terminology. By providing access to all those involved with applying terminology, such as engineers and marketing, translators and terminologists, it ensures consistent and high-quality content and branding from source through to translation.

1.2 Why should I upgrade?

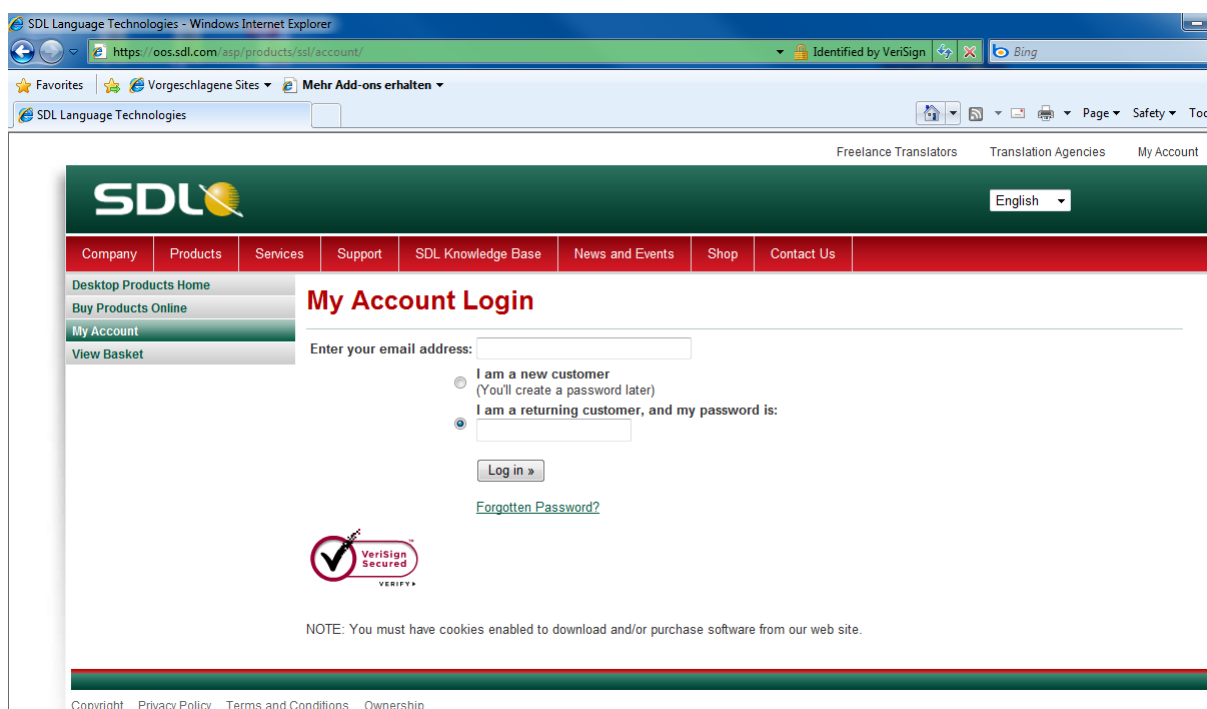
If you want to access a SDL MultiTerm 2009 Server you will need to upgrade all client installations to SDL MultiTerm Desktop 2009 SP2. SDL MultiTerm Desktop 2009 SP2 offers various improvements. Among other enhancements, the improved and updated user interface allows easier termbase editing and adding of terms. The advanced search 'Rich Hitlist' display enables you to customize how search results are viewed. For details on the SDL MultiTerm 2009 SP2 client, please see <http://www.sdl.com/en/sites/sdl-trados-solutions/desktop-products/sdl-multiterm-2009-desktop.asp>.

1.3 How do I upgrade?

Upgrading is easy! You can keep your already existing SDL MultiTerm 2007 installation - if you have not installed SDL MultiTerm 2007 you do not have to. You can choose during installation if you want to keep the SDL MultiTerm 2007 installation or not. SDL MultiTerm 2007 is only required if you need access to SDL MultiTerm Server 2007

1.4 Obtain the installer

Go to the [My Account Login](#) page



Login and click on **My Downloads** in the left hand column.

Then locate the SDL MultiTerm Desktop 2009 installer in the list and click on the + sign to expand the entry (if you purchased SDL Trados Studio 2009 you might find SDL MultiTerm 2009 below the SDL Trados 2009 Studio entry).

My Downloads

My Products

Click the Product Name to show the files available to download.

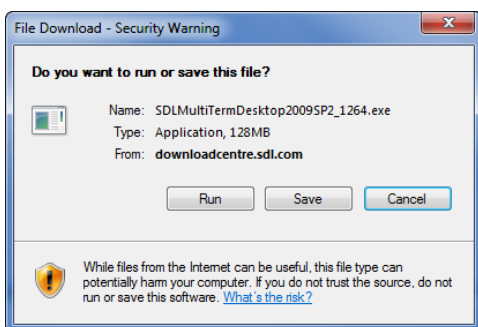
Product	Date Released	Size	Download
SDL MultiTerm 2009 Desktop SP2 - Now Available! SDL MultiTerm 2009 Desktop SP2 Please refer to the knowledge base article for What's New and What is Fixed in SDL MultiTerm 2009 SP2 . Please also refer to the SDL MultiTerm SP2 release notes and installation guide for more information. Filename: SDLMultiTermDesktop2009SP2_1264.exe	25-Feb-2010	135MB	Download Alternative download via FTP ?

[Archived product updates »](#)

Is your product download not listed?
Please go to [My Support](#).

Click on the red **Download** button on the right hand side.

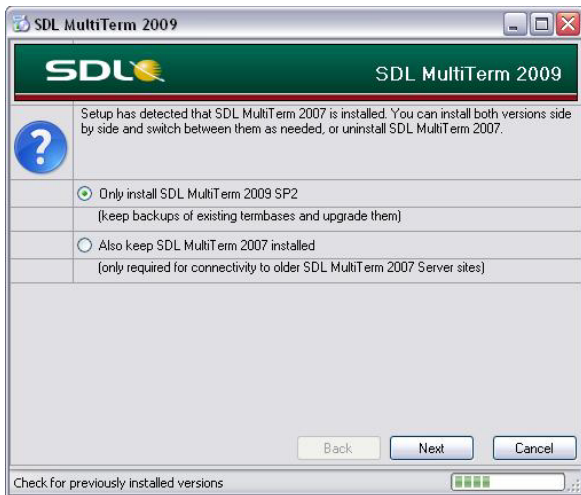
You will then be prompted for the file to be saved



Select **Save** to save the file permanently..

1.5 Run the installer

Once downloaded, double-click the SDL MultiTermDesktop2009SP2_1264.exe file and follow the instructions on the screen. If you have SDL MultiTerm 2007 installed on your machine you need to decide if you want to keep it or if you want to uninstall it. Keeping it is only recommended when you have to connect to SDL MultiTerm 2007 Team or SDL MultiTerm 2007 Server.



The installation should not take longer than 15 minutes.

1.6 Start MultiTerm

Once the installer has finished you can use SDL MultiTerm Desktop 2009. Depending on the licensing model you are using you might get asked to provide a license upon initial start-up.

1.7 Data migration – accessing legacy termbases

You might want to access termbases created in SDL MultiTerm 2007. You simply can open your existing 2007 termbases, they will be upgraded on the fly. If you run SDL MultiTerm 2007 and SDL MultiTerm 2009 on the same machine, termbases are not shared between the two versions. For further information please visit www.sdl.com and select SDL Knowledge Base from the support tab at the top of the screen. Once within the SDL Knowledge Base type 2947 to view the relevant article.

For further information on what happens with your existing termbases. Please refer to article 2572 in the SDL Knowledge Base.

1.8 Any Problems?

If you have an SDL Support and Maintenance agreement (PSMA) then simply log a case in the usual way.

If you do not have an SDL Support and Maintenance agreement then visit our [Knowledge Base](#).

To get a quotation to purchase a Support and Maintenance agreement please contact contractrenewals@sdl.com

SDL MultiTerm Desktop 2009 upgrade process:

