



QUICK START GUIDE

**SDL TRADOS STUDIO 2009
TRANSLATION MEMORY MANAGEMENT**

INNOVATION DELIVERED.

SDL | Trados Studio
2009

COPYRIGHT

SDL Trados Studio Translation Memory Management Quick Start Guide
Copyright ©2009-2010 SDL plc.

All rights reserved. No part of this documentation may be duplicated in whole or in part or reproduced in any form without the express written permission of SDL plc.

This product may include open source or similar software designated: Hunspell distributed under [GNU Lesser General Public License version 3](#); Sharpzplib and Spring.net distributed under [GNU General Public License version 3](#) with restrictions; ICU distributed under IBM ICU License; Log4Net, Xalan and Xerces distributed under [Apache License version 2.0](#); Wix distributed under Common Public License version 1.0; and SQLite which is public domain and requires no license for this distribution.

Trados, MultiTerm, SDL PerfectMatch, SDLX, Passolo and TranslationZone are registered trademarks of SDL plc. Translator's Workbench, Trados Studio, TagEditor, QuickPlace and AutoSuggest are trademarks of SDL plc. All other trademarks are the property of their respective owners. The names of other companies and products mentioned herein may be the trademarks of their respective owners. Unless stated to the contrary, no association with any other company or product is intended or should be inferred.

Although SDL takes all reasonable measures to provide accurate and comprehensive information about the product, this documentation is provided as-is and all warranties, conditions or other terms concerning the documentation whether express or implied by statute, common law or otherwise (including those relating to satisfactory quality and fitness for purposes) are excluded to the extent permitted by law.

Information in this documentation, including any URL and other Internet Web site references, is subject to change without notice. Without limiting the rights under copyright, no part of this document may be reproduced, stored in or introduced into a retrieval system, or transmitted in any form or by any means (electronic, mechanical, photocopying, recording, or otherwise), or for any purpose, without the express written permission of SDL plc.

This guide ships with SDL Trados Studio 2009.

February 2010

Table of Contents

COPYRIGHT	2
Table of Contents	3
About this Quick Start Guide	4
<i>Who is This Guide For?.....</i>	4
<i>How to Use this Guide</i>	4
<i>Other Information Sources.....</i>	4
About the Translation Memories View	5
<i>A First Look at the Translation Memory View in SDL Trados Studio.....</i>	6
Creating and Maintaining Translation Memories	7
<i>How to Create a File-based Translation Memory.....</i>	7
<i>Editing Translation Memory Settings.....</i>	12
Managing Translation Memory Data	14
<i>Maintenance Options</i>	14
<i>Opening a Translation Memory</i>	15
<i>A Closer Look at the TM Side-by-Side Editor</i>	16
<i>Searching, Editing and Saving Changes in the Translation Memory</i>	17
<i>Searching the Translation Memory.....</i>	17
<i>Editing a Translation Unit</i>	18
<i>Saving Pending Changes.....</i>	18
<i>Filters and Batch Editing</i>	19
<i>Creating and Applying a Filter</i>	19
<i>Batch Editing Translation Units</i>	20
<i>About Importing Data into a Translation Memory</i>	23
<i>About Importing TMX Files.....</i>	23
<i>About Importing Bilingual Files (.sdlxliff, .ttx, .itd).....</i>	23
<i>Importing a Sample Bilingual File</i>	24
End of Quick Start Guide	28

About this Quick Start Guide

Who is This Guide For?

This guide is for users who create and maintain translation memories.

How to Use this Guide

You can use the sample files to complete the exercises. Each exercise builds on the last so if you are using the sample files you need to follow through the instructions step-by-step.



This symbol indicates there are sample files available to complete the exercise and their location.



This symbol indicates that there is tip providing additional information on the task you are performing.

NOTE

This symbol indicates that there is an important piece of information you need to know for the task you are performing.

Keyboard Shortcuts

Any keys that you need to press on your keyboard are displayed in the following font: `Ctrl+Enter`.

Other Information Sources

Here are some other sources of information you can access:

- *SDL Trados Studio Help*
- *SDL TM Server Help*
- *SDL Server Installation Guide*
- *SDL Trados Studio Migration Guide*
- *Translating and Reviewing Documents Quick Start Guide*
- *Project Management Quick Start Guide*

About the Translation Memories View

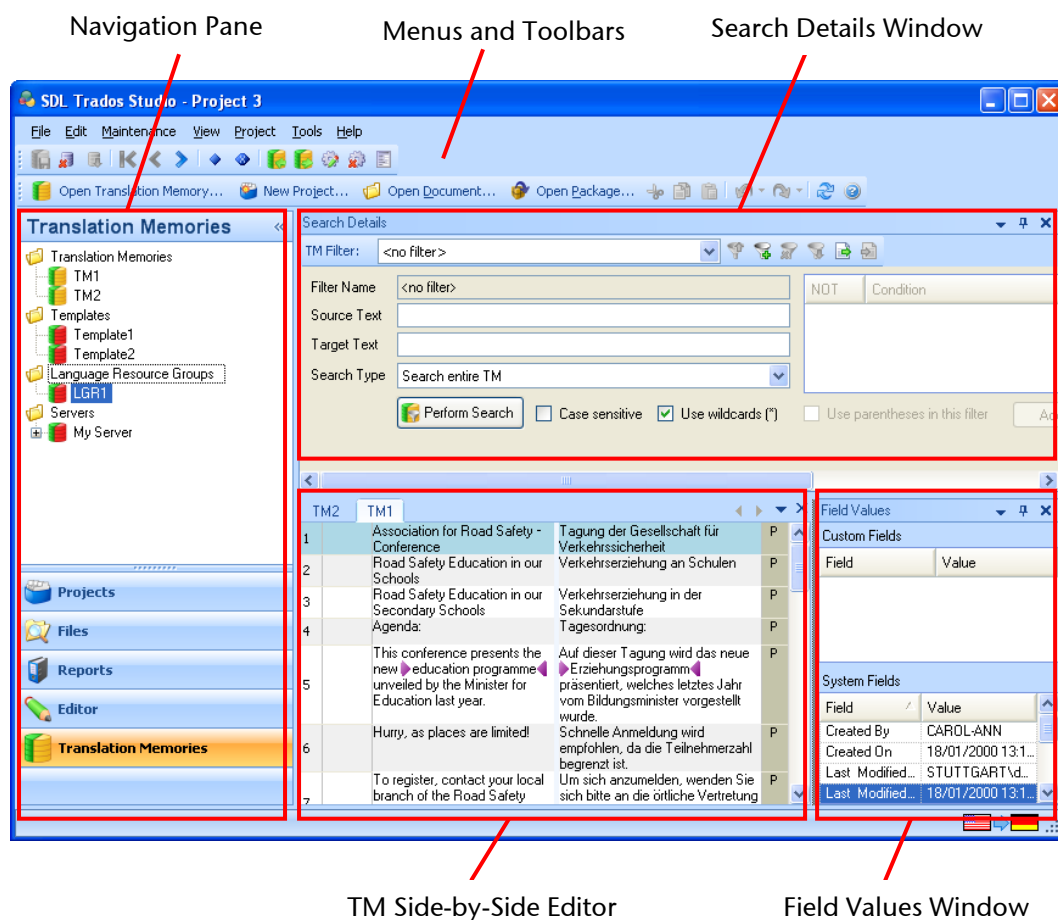
Translation memories are created and maintained in the **Translation Memories** view in SDL Trados Studio. Depending on your level of access, you can perform the following tasks in the **Translation Memories** view:

- Create a translation memory
- Open a translation memory
- Edit and delete translation units in the translation memory
- Assign custom field values to translation units
- Search and filter the translation memory data
- Import content into a translation memory
- Export content from a translation memory
- Create language resource templates
- Upgrade translation memories from SDL Trados 2007 and SDLX 2007

A First Look at the Translation Memory View in SDL Trados Studio

The **Translation Memories** view contains the following components:

- Navigation pane, where you can see the translation memories that are currently open and navigate between them. You can also see language resource templates and server-based translation memories.
- Menus and toolbars containing maintenance tools.
- TM side-by-side editor window, where you perform maintenance on your translation memories.
- **Search Details** window, where you create and apply filters to your translation memories.
- **Field Values** window, where you view and edit field values for the selected translation unit.



Creating and Maintaining Translation Memories

You can create both local and server-based translation memories in the **Translation Memories** view. Assume you want to create a file-based English-German translation memory in this exercise.

NOTE For detailed information on server-based translation memories, refer to the *SDL Trados Studio Help* and the *SDL TM Server Help*.

How to Create a File-based Translation Memory

To create your English-German file-based translation memory:

1. Click **Translation Memories** in the navigation pane to display the **Translation Memories** view.
2. Press **Alt+Shift+N** or select **File > New > Translation Memory** from the menu bar. The **New Translation Memory** wizard is displayed on the **General** page.

3. Complete the **General** page:
 - In the **Name** box, enter the name, *Sample EN-DE*.
 - Check and if necessary, select *English (United States)* and *German (Germany)* from the **Source Language** and **Target Language** drop-down lists.
 - Click **Next**.



Tip: You can also base the new translation memory on an existing translation memory, by clicking the **Browse** button next to the **Create From** box. This can be useful when you want to copy the setup from the other translation memory (for example, custom fields and segmentation rules).

The **Fields and Settings** page is displayed. This page is used to create custom fields and values. These allow you to further describe the translation units (TU) that are stored in your translation memory.

New Translation Memory

Fields and Settings
Specify fields and settings for this new translation memory.

Fields

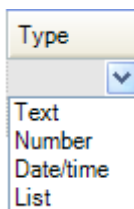
Name	Type	Picklist	Allow Multiple Values
Project	Text		<input checked="" type="checkbox"/>

Settings

Recognize dates Recognize acronyms
 Recognize times Recognize variables
 Recognize numbers Recognize measurements

Buttons: Help, < Back, Next >, Finish, Cancel

4. Create a text field called *Project*. This will allow you to specify which project a translation unit is associated with.
 - Place your cursor in the **Name** column and type *Project*.
 - Hover over the **Type** field and an arrow is displayed. Click the arrow to display the drop-down list and select *Text*.



Tip: You can also create date, number and time fields.

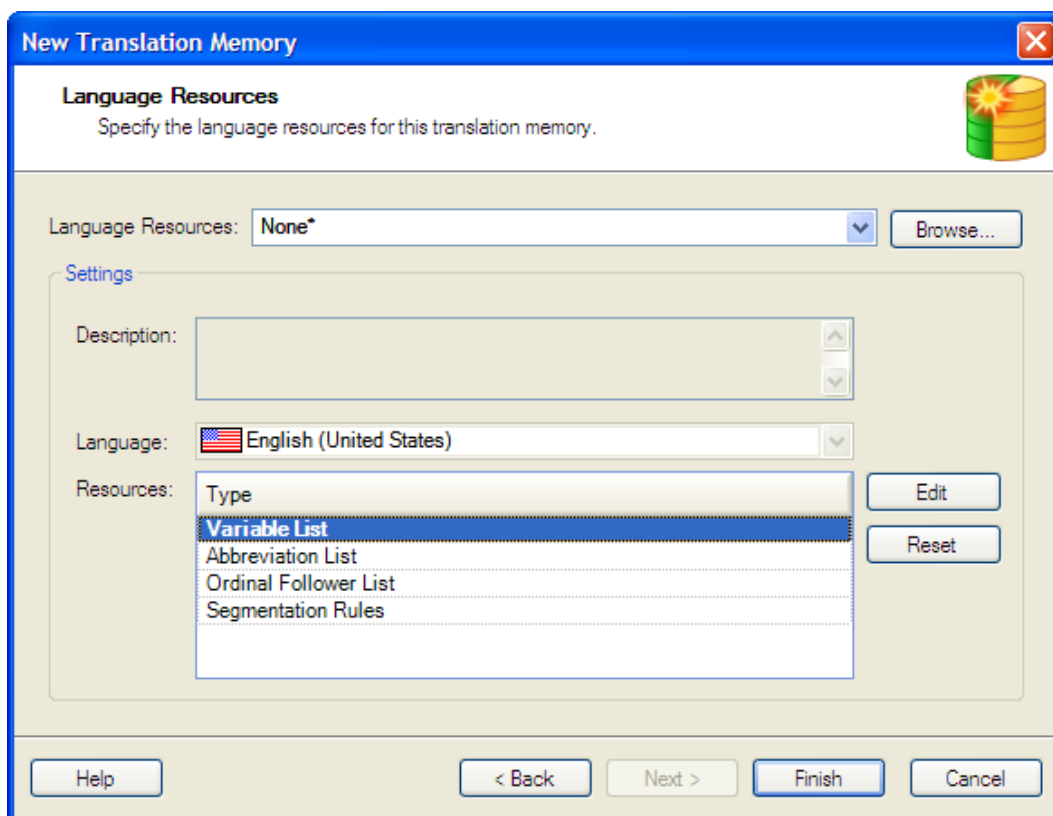
- Select the **Allow Multiple Values** check box. This allows you to specify more than one project to which as translation unit is associated.

The **Settings** at the bottom of the **Fields and Settings** page are used to identify elements that do not change during translation. When the recognition settings are enabled these items are identified as placeables.

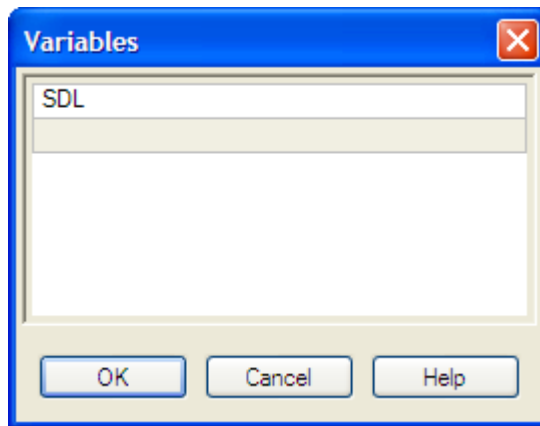
You can display the QuickPlace drop-down list during translation and select placeables from the current source segment and insert them into the target translation. This list is called QuickPlace because it allows you to quickly place elements from the source segment into the target, such as the formatting, acronyms, numbers, dates and other types of placeables.

5. Assume that you want all acronyms to be spelled out in the translation rather than transferred using QuickPlace. In this case you would, clear the check box next to **Recognize acronyms** so that they are not recognized as placeables during translation.
6. Click **Next**.

The **Language Resources** page is displayed. This is where you can create or modify lists of language resources. These lists are used in conjunction with the segmentation rules in translation memory processing and to identify untranslatable content. The default language resource settings are automatically applied.



7. Assume this translation memory will be used for translating the content of the SDL website into German. Since you do not want the company name to be translated, enter SDL as a variable.
 - Double-click on **Variable List** in the **Resources** section. The **Variables** dialog box is displayed. The default Variable List does not contain any values.



- Double-click on the first line and type *SDL*.
- Click **OK** to close the dialog box.

NOTE If you based your new translation memory on an existing translation memory, the language resources in the selected translation memory are applied to the new translation memory

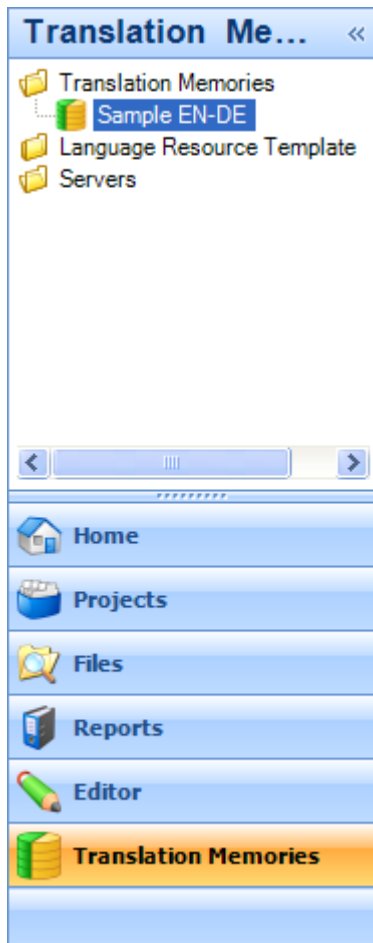
You can also select language resources templates that you created prior to creating this translation memory. For more information on language resources, see the *SDL Trados Studio Help*.

8. Click **Finish** to create the translation memory. The **Creating** page is displayed.
9. When the status of the items on the **Creating** page changes to **Completed**, click **Close** to save the newly created translation memory.

The translation memory is saved with an .sdltm extension to the following default location:

...My Documents\SDL Trados Studio\Translation Memories

The translation memory is added to the navigation pane in the **Translation Memories** folder.



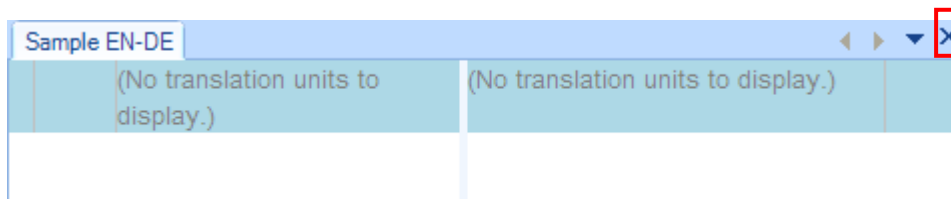
Editing Translation Memory Settings

Assume you now want to edit the translation memory settings to create a field that specifies whether the translation unit is used in publications that you print or in online publications. You can edit the translation memory in the **Translation Memory Settings** dialog box.



Use the *Sample EN-DE* translation memory that you created in the last exercise.

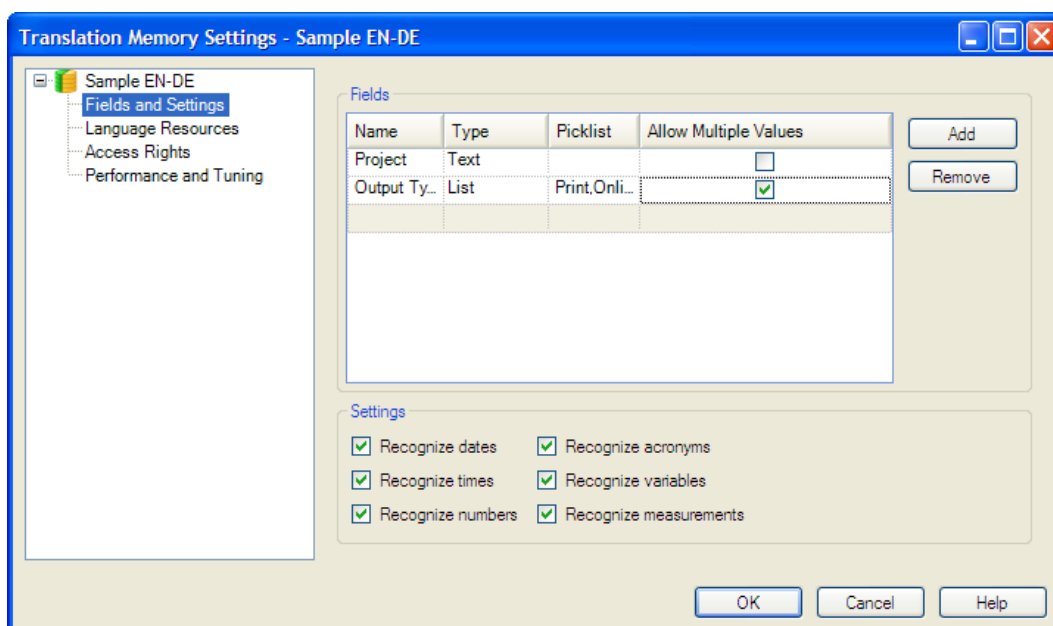
1. In order to edit some of the translation memory settings, the translation memory must be closed in the TM side-by-side editor. If your translation memory is still open for maintenance, click the **X** in the top right corner of the TM side-by-side editor to close the current maintenance session. The translation memory is closed in TM Side-by-side editor but remains on the navigation pane.



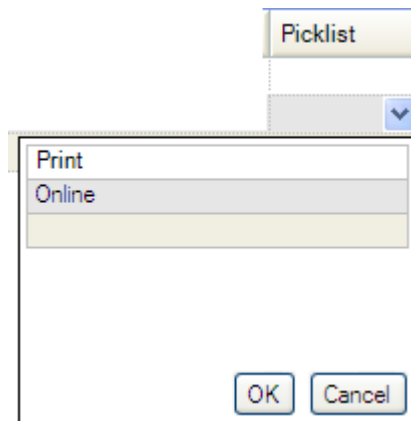
Click to close the current maintenance session.

2. Right-click on the translation memory, *Sample EN-DE* in the navigation tree under **Translation Memories** and select **Settings** from the shortcut menu or from the **File** menu. This is the translation memory that you created in the last exercise.

The **Translation Memory Settings** dialog box is displayed.



3. Create a List field called *Output Type*.
 - Select the **Fields and Settings** page.
 - Place your cursor in the first empty field under the **Name** column and type *Output Type*.
 - Hover over the **Type** field and an arrow is displayed. Click the arrow to display the drop-down list and select *List*.
 - Hover over the **Picklist** field and an arrow is displayed. Click the arrow to display the box where you can add the two field values: *Print* and *Online*.



- Select the **Allow Multiple Values** check box. This allows you to choose both values if the translation unit is used in print and online.
4. Click **OK** to apply the new settings.

NOTE

You can also specify settings on the following pages:

- *[TM Name]* - This is where you can view general details of the translation memory.
- **Language Resources** - This is where you can modify language resource lists in your translation memory. These lists are used in conjunction with the segmentation rules in translation memory processing and are also used to identify untranslatable content.
- **Access Rights** - This is where you can protect file-based translation memories by defining passwords that are linked to translation memory maintenance or user rights.
- **Performance and Tuning** - This is where you can use different tools to improve the performance of server-based translation memory searches. This does not apply to file-based translation memories.

Managing Translation Memory Data

Translation memory data is managed in the **Translation Memories** view. All translation memories that are currently available for editing appear in the navigation tree in the **Translation Memories** view.

Maintenance Options

Assume that you want to make the following changes to your translation memory to ensure that when the translation memory is used during translation, the translator receives quality matches.

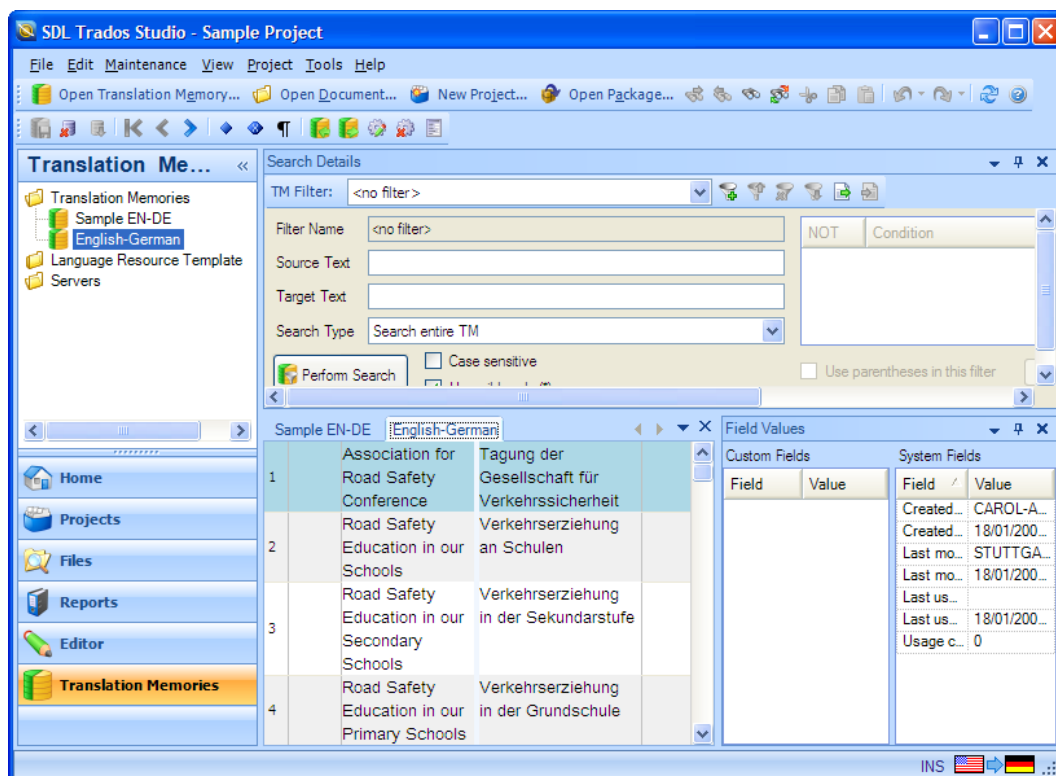


...My Documents\SDL Trados Studio\Projects\Samples\SampleProject\TMs\English-German.sdltm

- Search for source segments that contain incorrect spellings and correct them.
- Save changes to edited translation units.
- Create filters to find all translations added by a particular user so that you can review the translations.
- Use batch editing to modify the spelling in more than one translation at the same time.
- Import translation units from previously translated bilingual documents so that you can use them in future translations of updated content.

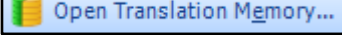


Tip: You can also perform additional maintenance on a translation memory, for example, assigning or changing custom field values, exporting and importing filters, and exporting translation memory data.



Opening a Translation Memory

Assume you want to perform the maintenance options listed above on the sample translation memory. To do this you need to open the translation memory for maintenance in the TM side-by-side editor.

1. In the **Translation Memories** view, click  on the toolbar. The **Open File-based Translation Memory** dialog box is displayed.
2. Select the *English-German.sdltm* sample translation memory that is provided with SDL Trados Studio.

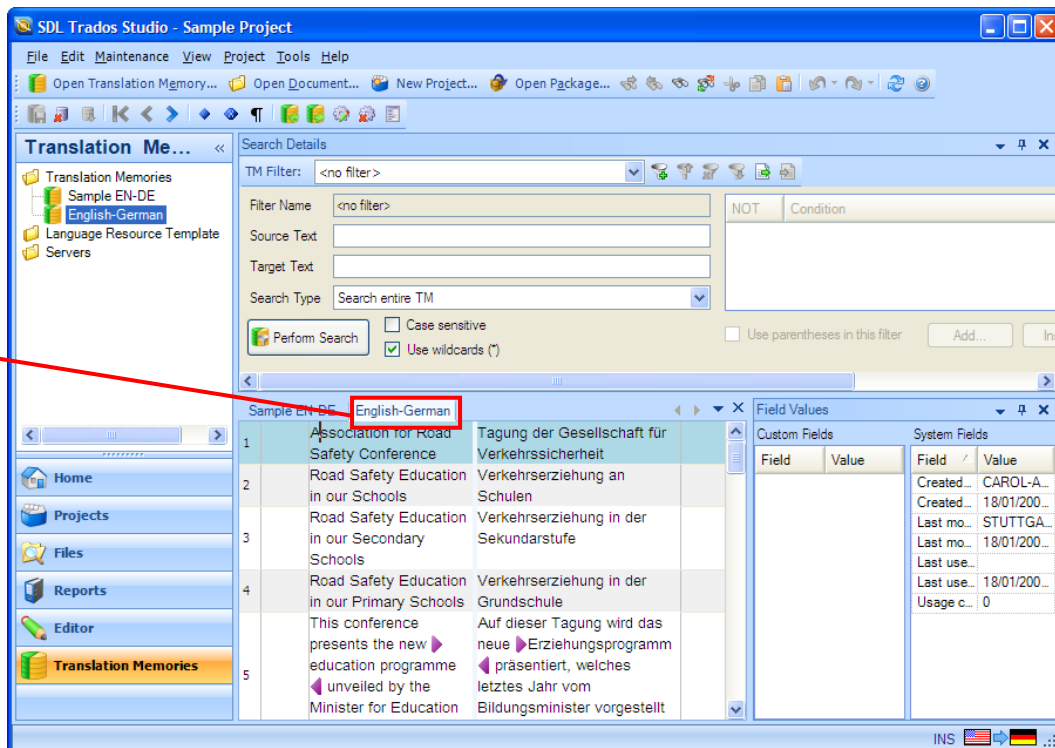


...My Documents\SDL Trados Studio\Projects\Samples\SampleProject\TMs\English-German.sdltm

If the translation memory is already in the navigation tree, double-click the translation memory or right-click the translation memory and select **Open** from the shortcut menu.

The translation memory is opened for editing in the TM side-by-side editor window and it becomes the active translation memory. When you select a row, any system and custom field values that are assigned to that translation unit are displayed in the **Field Values** window.

English-German.sdltm is opened for maintenance.






A Closer Look at the TM Side-by-Side Editor

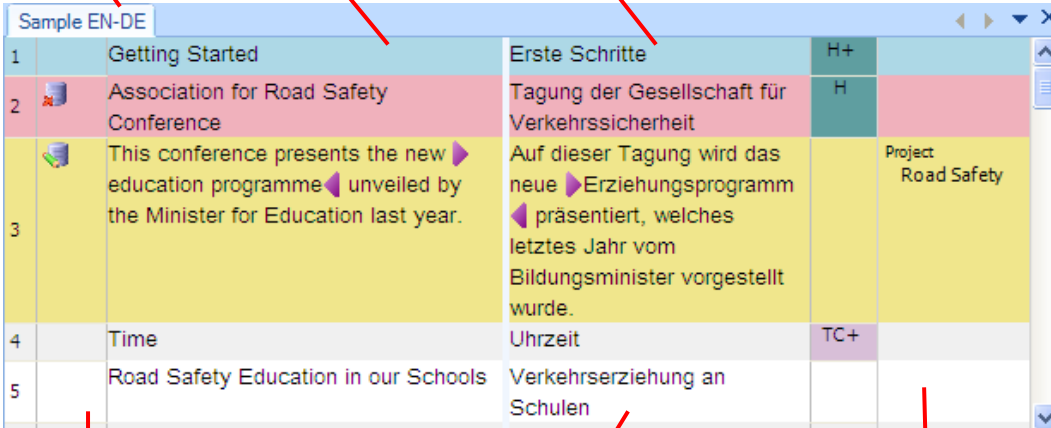
The TM Side-by-Side Editor is where search results are displayed and where you can edit translation units.

Columns

- The translation unit status column indicates the status of the translation unit. For example, if it is marked for deletion or has been edited. This is also indicated by the color in which the translation unit is highlighted.
- To the right of the target language segments is the document structure column. It displays a code that tells you where the segment text appeared in the source document from which it was extracted. For example, TC = table cell and H1 = header 1.
- The final column, custom field values, displays any field values assigned to the translation unit. This column is only displayed if there are custom field values assigned to the translation units.

Colors

-  This color indicates that the column is currently selected.
-  This color indicates that the translation unit has been modified and that changes to the translation unit are pending and have not yet been committed (saved).
-  This color indicates that the translation unit is marked for deletion and that this deletion has not yet been committed (saved).



The screenshot shows a window titled "Sample EN-DE" with a list of translation units. Red arrows point from labels to specific parts of the interface:

- TM Window Name Tab:** Points to the "Sample EN-DE" tab at the top.
- Source Language Segments:** Points to the source text in the first row.
- Target Language Segments:** Points to the target text in the first row.
- Translation Unit Status Column:** Points to the first column containing numbers 1-5.
- Document Structure Column:** Points to the column containing codes like H+, H, TC+, and H+.
- Custom Field Values:** Points to the column containing "Project Road Safety".

Translation Unit Status	Source Language Segments	Target Language Segments	Document Structure Column	Custom Field Values
1	Getting Started	Erste Schritte	H+	
2	Association for Road Safety Conference	Tagung der Gesellschaft für Verkehrssicherheit	H	
3	This conference presents the new education programme unveiled by the Minister for Education last year.	Auf dieser Tagung wird das neue Erziehungsprogramm präsentiert, welches letztes Jahr vom Bildungsminister vorgestellt wurde.		Project Road Safety
4	Time	Uhrzeit	TC+	
5	Road Safety Education in our Schools	Verkehrserziehung an Schulen		

Searching, Editing and Saving Changes in the Translation Memory



...My Documents\SDL Trados Studio\Projects\Samples\SampleProject\
TMs\English-German.sdlm

Searching the Translation Memory

Assume that you just imported translation units into this translation memory that were from an English (United Kingdom) – German (Germany) bilingual document. However, your translation memory is an English (United States) - German (Germany) translation memory.

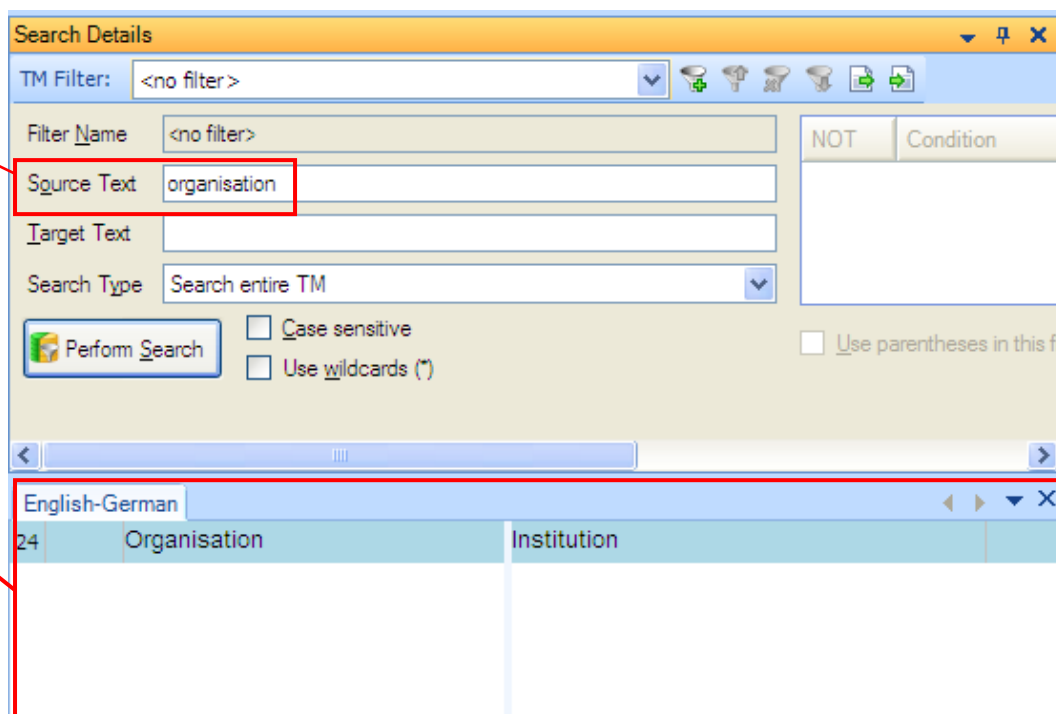
You want the imported source text in this translation memory to use United States spelling. Search for the English spelling of *organisation* in the source text and change it to the United States spelling *organization*.

1. Search for *organisation*:

- Enter *organisation* in the **Source Text** box in the **Search Details** window.
- Clear the **Case sensitive** check box.
- Click **Perform Search**.

One translation unit has been found containing *organisation* and is displayed in the TM side-by-side editor.

Enter
organisation



Search results in
the TM side-by-
side editor

Editing a Translation Unit

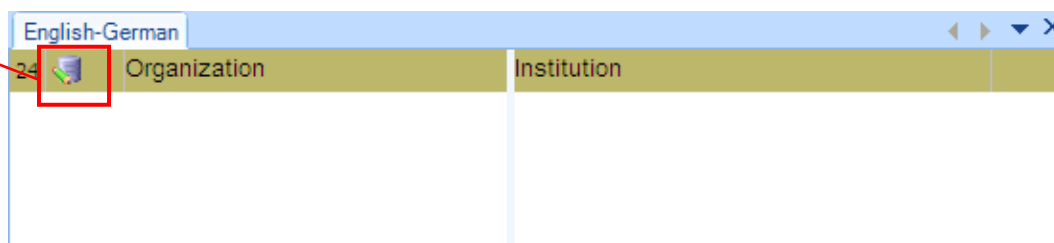
Now that you have located the United Kingdom spelling of the word *organisation*, change it to the United States spelling, *organization*.

- Click in the source segment and type or paste the United States spelling of *Organization*.


The color of the translation unit changes to dark yellow and the following icon is displayed in the translation unit status column. The icon indicates that the translation unit has pending changes that have not yet been saved.



Translation unit status




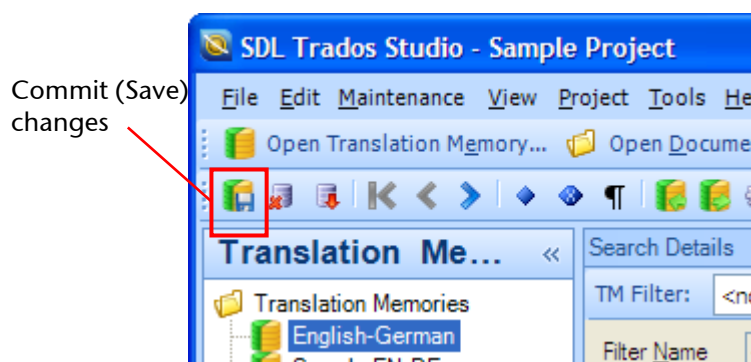
You can also edit translation units in the following ways:

To	Do the following
Mark a translation unit for deletion,	Click  on the Maintenance toolbar.
Assign custom field values to the translation unit,	Use the Field Values window.

Saving Pending Changes

Once you have corrected the text in the translation unit, you next need to save your changes.

- Click the **Commit Changes**  button on the **Maintenance** toolbar. The translation unit is now saved with the new spelling.



Filters and Batch Editing



...My Documents\SDL Trados Studio\Projects\Samples\SampleProject\
TMs\English-German.sdltm

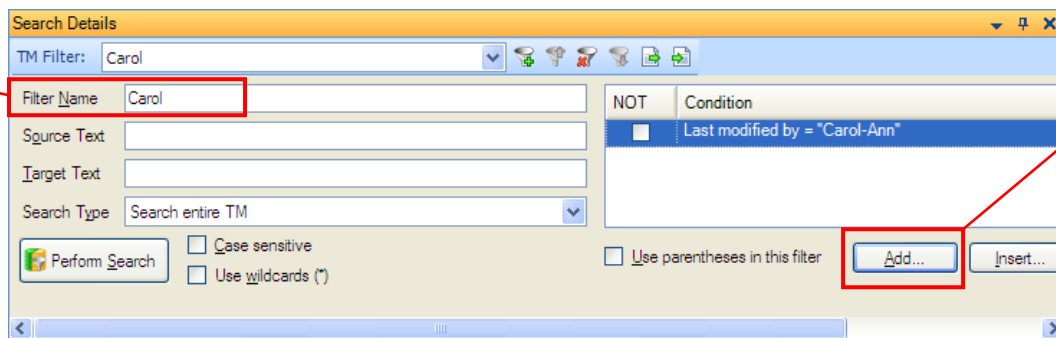
Creating and Applying a Filter

As well as being able to search the source and target text, you can also use filters in combination with the search feature or by themselves to find certain translation units. This filters out the translation units that do not match the conditions of the filter. Assume you only want to view all translations modified by Carol-Ann to ensure the translations are correct.

NOTE If you still have search criteria in the **Source Text** box, delete it now.

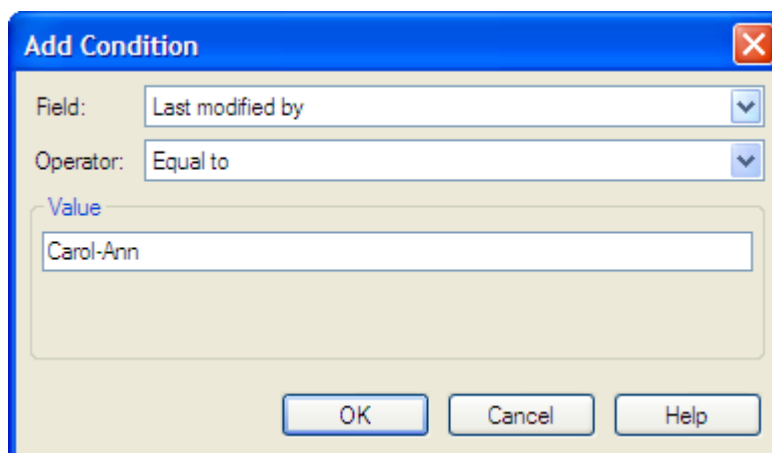
1. In the **Search Details** window, click the **Add Filter** icon  to add a filter.


Enter Filter Name



Click **Add** to add a new condition

2. Enter the name of the filter, *Carol*, in the **Filter Name** box. The new name is automatically displayed in the **TM Filter** box with an * asterisk next to it to indicate this filter is not saved.
3. Click **Add** to add a new condition to the filter and open the **Add Condition** dialog box.
4. Complete the dialog box with the settings below and click **OK** to add the condition.



5. Click the **Save** icon  to save the filter. The filter is now saved with the translation memory.
6. Click **Perform Search**. The translation units that were last updated during translation by Carol-Ann are displayed.

Batch Editing Translation Units

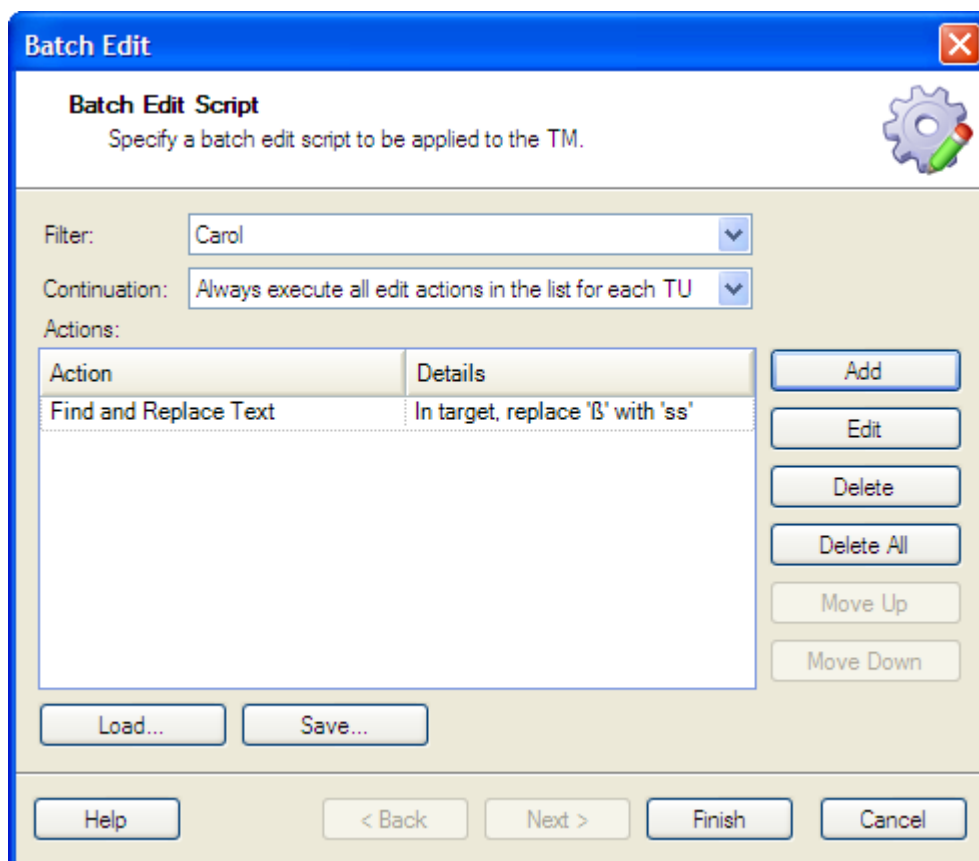
In Carol-Ann's translations that were displayed when you applied the filter in the last section, there are several words that use the old German spelling which contains the character *ß*. Assume you want to change those translations to the new spelling *ss*. To do this, batch edit a group of translations at the same time.

NOTE There are some German spellings that still contain this character *ß*. Assume for the purposes of this example though, that the new spelling applies to all German words containing *ß*.

14	Stress the role of parents in enforcing road safety awareness as part of home life.	Besondere Betonung findet die Rolle der Eltern, die das Bewußtsein über Verkehrss
16	Vehicle awareness	Fahrzeugbewußtsein


Words containing *ß*

- Right-click on the *English-German* translation memory in the navigation tree and select **Batch Edit** from the shortcut menu. The **Batch Edit** wizard is displayed on the **Batch Edit Script** page.



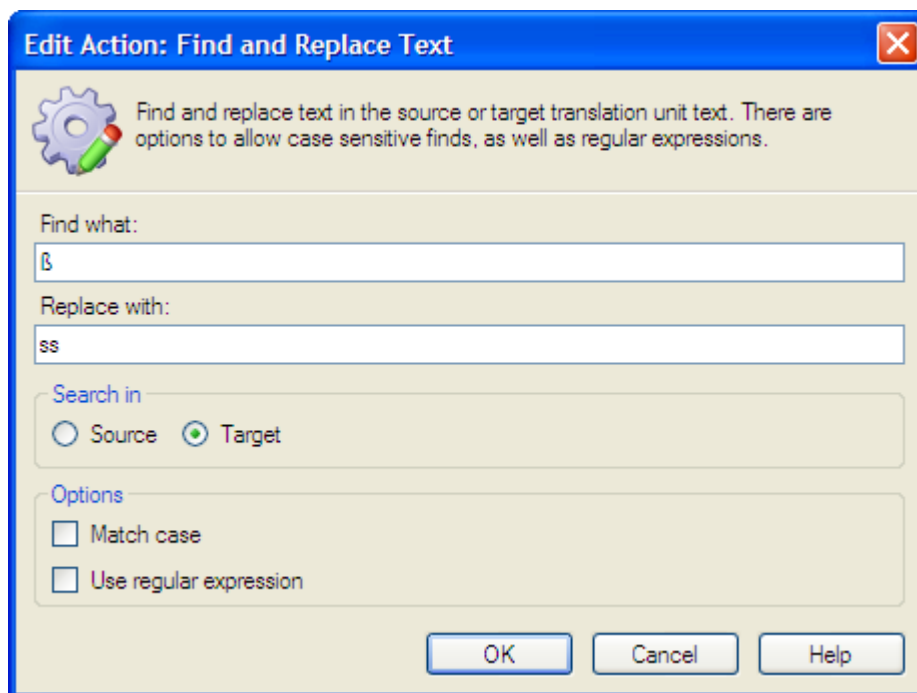
- Select the *Carol* filter from the **Filter** drop-down list. This will apply the batch edit to only translation units that were last modified by Carol-Ann during translation.

- Click **Add** and select **Find and Replace Text** from the drop-down list.

 **Tip:** You can also use Batch Edit to change field values assigned to translation units and to delete tags in a group of translation units.

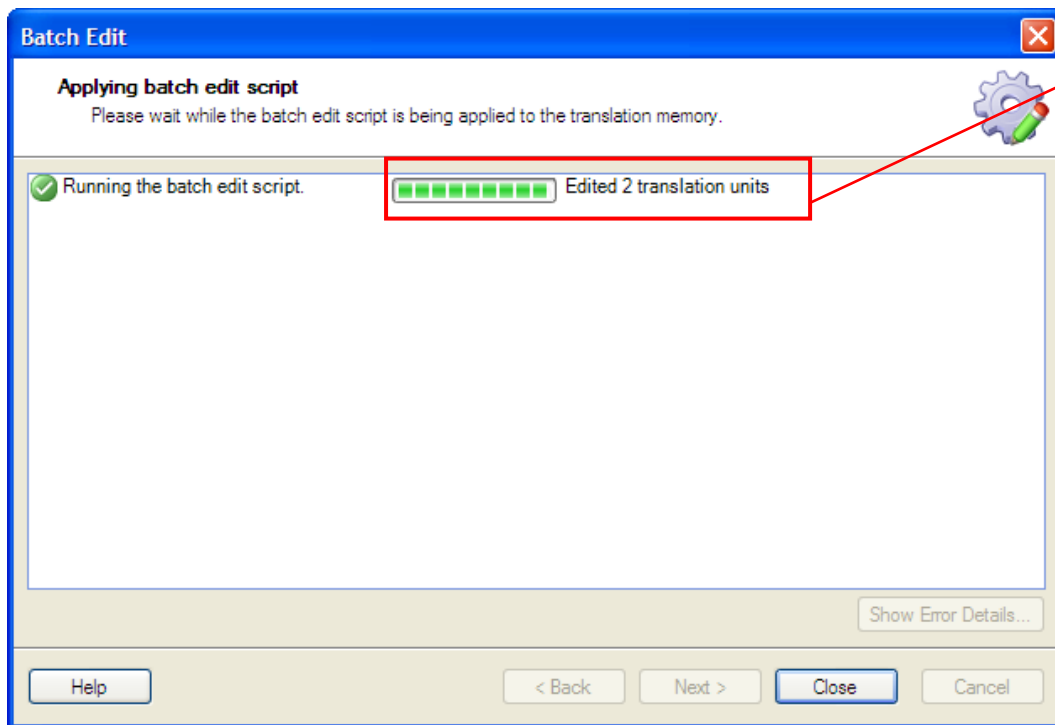
- The **Edit Action: Find and Replace Text** dialog box is displayed. Complete this dialog box with the following settings:

- Find what:** ß (You can copy and paste this character into the box or press Alt + 0223 (on the numeric keypad)).
- Replace with:** ss (Enter these as lowercase letters)
- If necessary, change the additional settings to match the dialog box below.



- Click **OK** to add the edit action to the list in the **Actions** box.

12. Click **Finish**. The **Applying batch edit script** page is displayed.



Two translation units have been updated.

13. Click **Close** to close the wizard.

NOTE Changes made by a batch edit are automatically committed and cannot be canceled.

The words in translation unit 14 and translation unit 15 now have the new German spelling.

14	Stress the role of parents in enforcing road safety awareness as part of home life.	Besondere Betonung findet die Rolle der Eltern, die das Bewusstsein über Verkehrss
16	Vehicle awareness	Fahrzeugbewusstsein

ß has change to ss

About Importing Data into a Translation Memory

You can import translation units and their associated data into a translation memory. The translation units are always imported but the associated data that is imported varies depending on the file type from which it was extracted.

Supported import types include:

- Translation Memory Exchange Documents (*.tmx, *.tmz.gz)
- SDL XLIFF Bilingual Documents (*.sdlxliff)
- TRADOStag Documents (*.ttx)
- SDL Edit Documents (*.itd)

NOTE For detailed information on how to upgrade your SDL Trados 2007 and SDLX 2007 translation memories, see the *SDL Trados Studio Migration Guide*.

About Importing TMX Files

The following data can be imported from a TMX file:

- Translation units
- Custom fields and their values
- System fields

About Importing Bilingual Files (.sdlxliff, .ttx, .itd)

The following data can be imported from a bilingual file:

- Translation units
- Context information (bilingual files contain a sequence of translation units that is used for creating context matches in the translation memory based on this sequence)

NOTE If you are importing data from SDL Trados 2007 and SDLX 2007, it is often better to import bilingual files instead of TMX files so that you can import the information needed to create context matches.

Importing a Sample Bilingual File

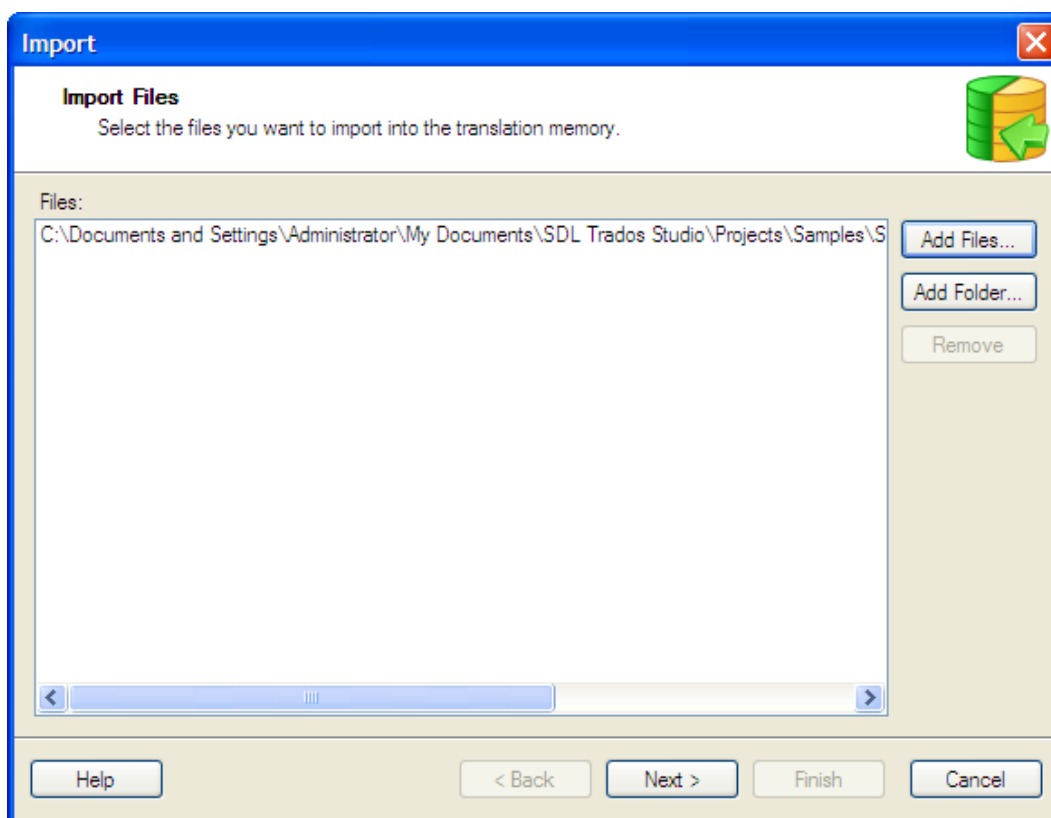
Assume a customer has asked you to prepare a translation memory for a project. The project is an update to previously translated documents. They do not have a translation memory from the project but they do have the bilingual translated files. Import the data into your sample translation memory so that the content can be leveraged for translating the updated documents.

1. Open the *Sample EN-DE.sdltm* translation memory.



...My Documents\SDL Trados Studio\Translation Memories\Sample EN-DE.sdltm (This is the sample translation memory you created in an earlier exercise.)

2. Right-click on the *Sample EN-DE* translation memory in the navigation tree and select **Import** from the shortcut menu. The **Import** wizard is displayed on the **Import Files** page.

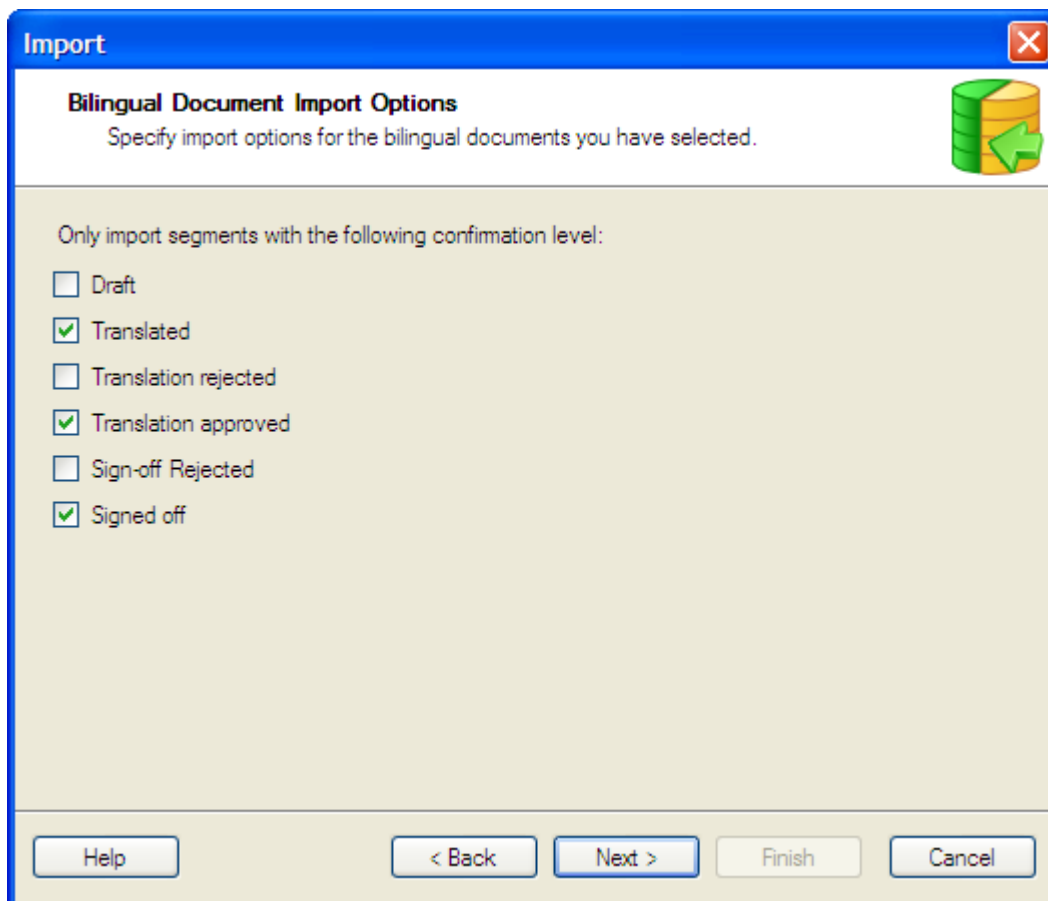


3. Click **Add Files** and select the *SecondSample.doc.sdlxliff*.



...My Documents\SDL Trados Studio\Projects\Samples\Sample Project\de-DE\SecondSample.doc.sdlxliff.

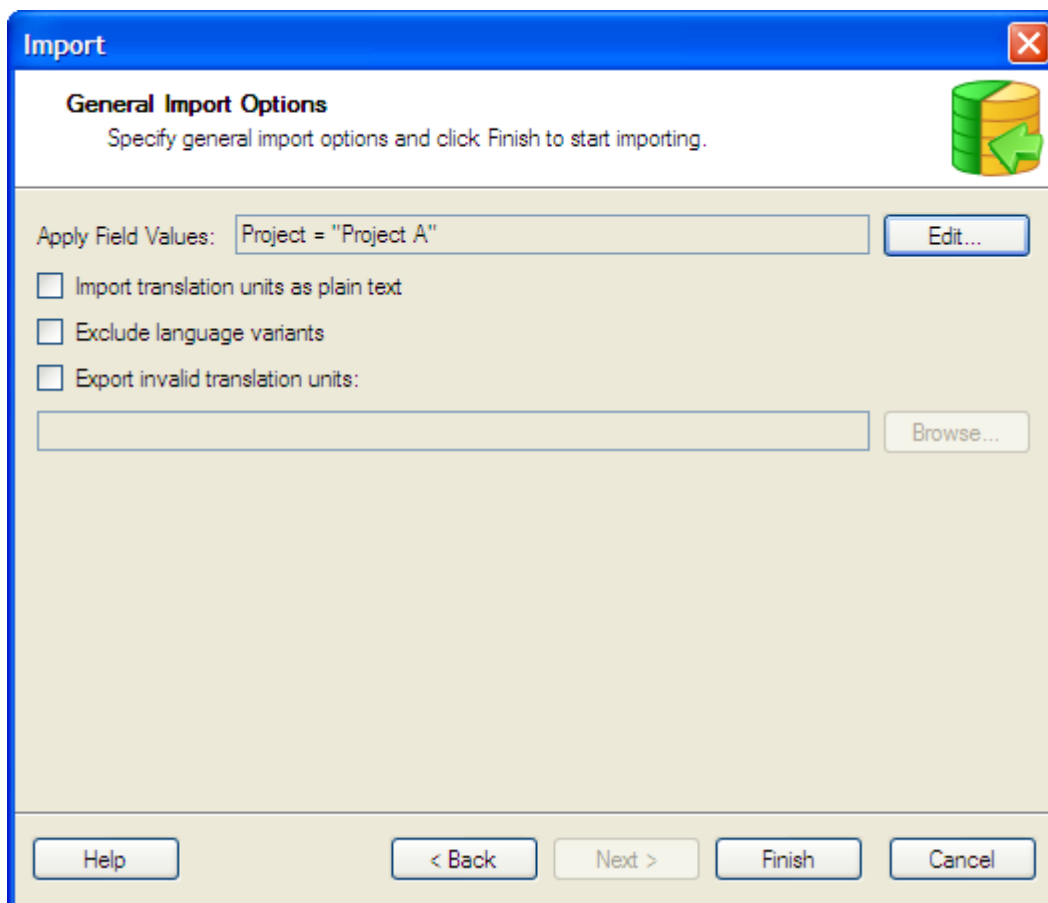
4. Click **Next**. The **Bilingual Document Import Options** page is displayed.



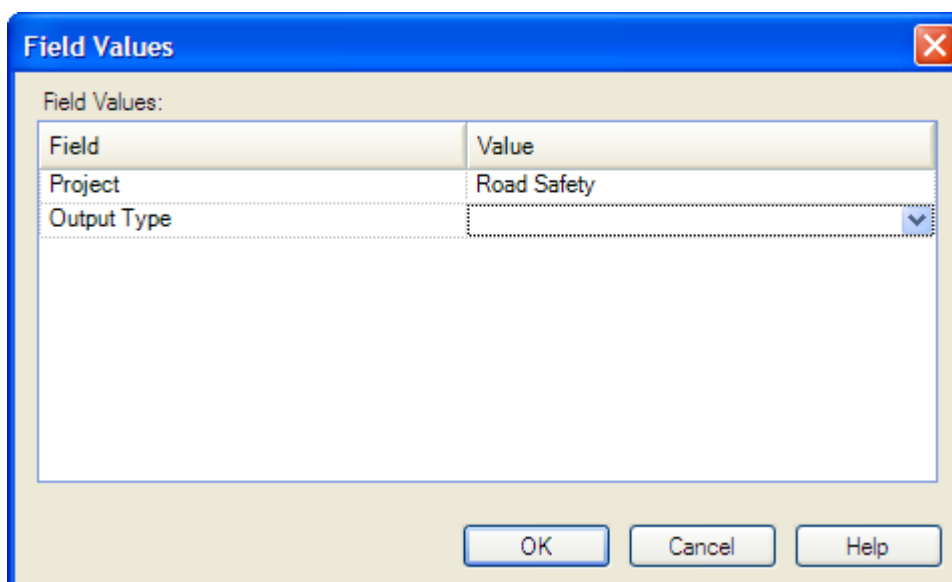
This page identifies the segments you want to import by their segment translation status. The currently selected confirmation levels indicate that the translations must have one of these statuses.

- **Translated** – This translation has been confirmed as complete.
 - **Translation approved** – The translation has been approved by the reviewer.
 - **Signed off** – The translation has been signed-off. This is another level of approval by a reviewer.
2. Accept the defaults on this page and click **Next**.

The **General Import Options** page is displayed.

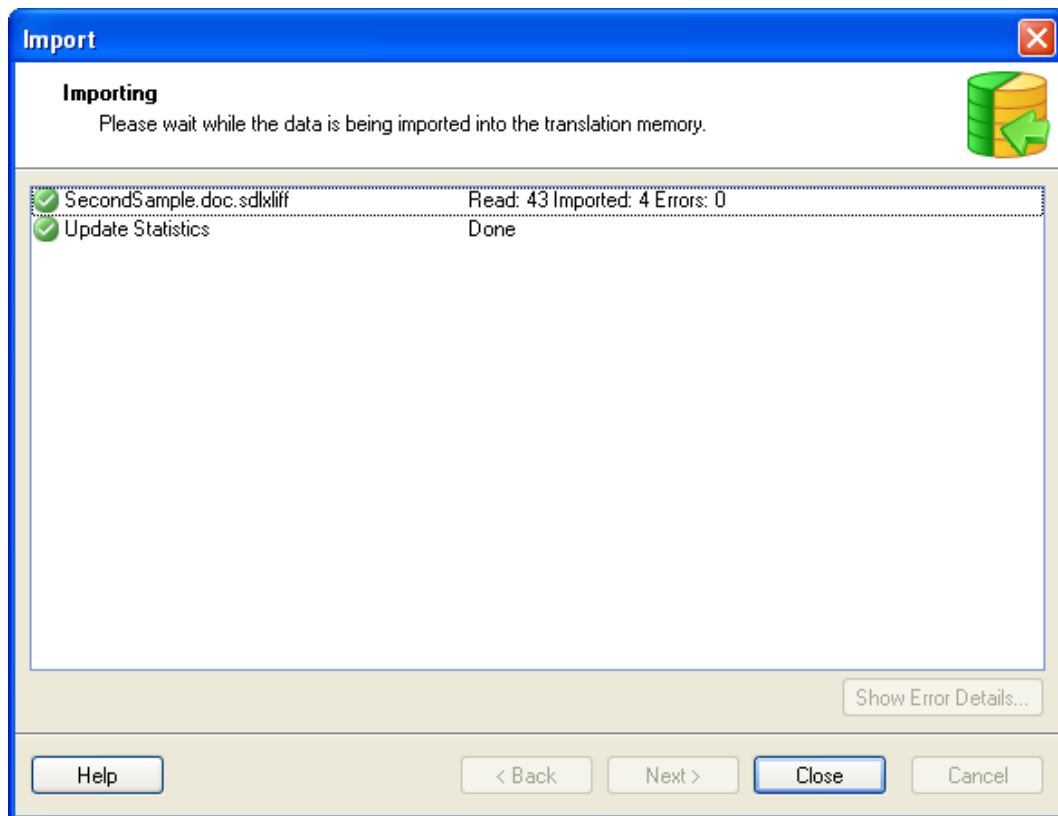


7. Add a field value that indicates that the imported translation units are for the Road Safety project. The value will be assigned to all imported translation units.
 - Click **Edit**. The **Field Values** box is displayed. The *Project* field and *Output Type* field that you created earlier are listed.



- Enter *Road Safety* in box next to *Project* in the **Value** column.

- Click **OK** to close the **Field Values** dialog box and display again the **General Import Options** page.
3. Click **Finish**. The **Importing** page is displayed.



This page displays each file being imported and indicates the status of each import. When the import has finished, the items on this page are listed as **Complete**. The results of the import indicate:

- *Read 43*: This indicates that 43 segments were read in the bilingual file during the import.
- *Imported 4*: This indicates that out of the 43 translation units that were read, only 4 of them were imported. This is because only 4 of the translations have a status of Translated, Translation Approved or Signed off.
- *Errors 0*: This indicates that there were no errors during the import.

NOTE If you have modified the sample file that you imported, your results may be different to these.

4. When the import is complete, the **Close** button becomes available. Click **Close** to close the wizard.

The results of the import are displayed in the TM side-by-side editor. Even though 4 translation units were imported, only 3 appear in the translation memory. This is because 2 of the imported translation units had the exact same source text and translation. Therefore, they were merged into 1 translation unit.

Sample EN-DE				
61	Association for Road Safety Conference	Tagung der Gesellschaft für Verkehrssicherheit	H	Project Road Safety
62	This conference presents the new education programme unveiled by the Minister for Education last year.	Auf dieser Tagung wird das neue Erziehungsprogramm präsentiert, welches letztes Jahr vom Bildungsminister vorgestellt wurde.		Project Road Safety
63	Time	Uhrzeit	TC	Project Road Safety

End of Quick Start Guide

Now you know how to create and manage your translation memories in SDL Trados Studio. For additional information about translation memories in SDL Trados Studio, see:

- *SDL Trados Studio Help* - This provides additional information about translation memories. You can access this help system by selecting **Help > Help Topics** from the menu bar in the SDL Trados Studio application.
- *SDL Trados Studio Migration Guide* - This provides information on how to upgrade your translation memories to SDL Trados Studio 2009 format. You can access this guide from the **Start** menu under **Programs > SDL > SDL Trados Studio 2009 > Documentation**.
- *SDL TM Server Help* - This provides information on how to manage your server-based translation memories. You can access this help system by clicking **Help** from the SDL TM Server Help application.

SDL is the leader in Global Information Management (GIM) solutions that empower organizations to accelerate the delivery of high-quality multilingual content to global markets. Its enterprise software and services integrate with existing business systems to manage the delivery of global information from authoring to publication and throughout the distributed translation supply chain.

Global industry leaders rely on SDL to provide enterprise software or hosted services for their GIM processes, including ABN-Amro, Best Western, Bosch, Canon, Chrysler, CNH, Hewlett-Packard, Microsoft, Philips, SAP, Sony, Sun Microsystems and Virgin Atlantic.

SDL has implemented more than 500 enterprise GIM solutions, has deployed over 170,000 software licenses across the GIM ecosystem and provides access to on-demand translation portals for 10 million customers per month. Over 1,000 service professionals deliver consulting, implementation and language services through its global infrastructure of more than 50 offices in 30 countries.

For more information, visit

www.sdl.com.

